



Anbritt &
Avea
Scarf & Hat

S10756 + S10757





S10756 + S10757

V.1/SMT

Anbritt & Avea Scarf & Hat

Design: Quail Studio



Knitting



Easy



Recommended Yarn

SIZES

Scarf	
Width	approx. 24
Length	approx. 171
Hat	
To fit head circumference	approx. 52-56
Circumference of hat	approx. 54
Brim to crown	approx. 19

All measurements are in cm

MATERIAL

Schachenmayr Alpaca classico, 50 g ball

about 90m/50 g (1.75 oz ≈ 98 yards)

col 00094 (kiesel mélange) Scarf 5 balls
 Hat 2 balls

Yarn amounts are approximate. Make sure to purchase enough of the same dye lot in order to complete your project.

1 circular needle size 6,0 mm, 60 cm long
double pointed needles (dpns) 6,0 mm
1 stitch marker
1 tapestry/yarn needle for weaving in ends

GAUGE

Trellis pattern:

18 sts and 24 rows/rnds = 10 cm x 10 cm

GTHE BASICS

Rib pattern:

K2, p2.

Trellis pattern:

Work according to chart. Numbers at right edge of chart indicate RS rows/odd-numbered rnds, numbers at left edge of chart indicate WS rows/even-numbered rnds. Work all RS rows from right to left, work all WS rows from left to right. Work all rnds from right to left. Repeat rows/rnds 1 – 20 for trellis pat.

INSTRUCTIONS

Scarf

Cast on 44 sts. Next WS row: Selvage st, * k2, p2; rep from * to last 3 sts, k2, selvage st. Work in rib pat as established for 6 cm, ending with a WS row.

Next RS row: Selvage st, work 1 slipped st (see chart key), then work row 1 of chart for trellis pat, working the 8-st pat rep 5 times, work 1 slipped st, selvage st.

Cont to work in pat as established until scarf measures approx. 159 cm from cast-on, 382 rows have been worked in trellis pat and last row worked is a chart row 2. Work in rib pat same as at beg of scarf for 6 cm, then bind off all sts in rib.

Total length = approx. 171 cm.

Carefully weave in all ends.

Hat

With dpns, cast on 80 sts. Arrange sts evenly on 4 needles, join for working in rnds and work rib pat in rnds for 4 cm.

Next inc rnd: Knit, increasing 24 sts as foll: * K2, M1R, k2, M1R, k3, M1R; rep from * 7 more times = 104 sts. Next, work rnd 1 of chart for trellis pat, working the 8-st pat rep 13 times around. Cont to follow chart for a total of 29 rnds (= approx. 12 cm).

Next rnd: * K1, p6, k1; rep from * 12 more times.

Next, work decreases to shape the crown as foll:

Rnd 1: * K1, p1; p2tog twice, p1, k1; rep from * 12 more times = 78 sts.

Rnd 2: * K1, p4, k1; rep from * 12 more times.

Rnd 3: * K1, p2tog twice, k1; rep from * 12 more times.

Rnd 4: * P1, k2, p1; rep from * 12 more times.

Rnd 5: P1, * k2, p2tog; rep from * 11 more times, k2, p2tog last st of this rnd and first st of next rnd = 39 sts.

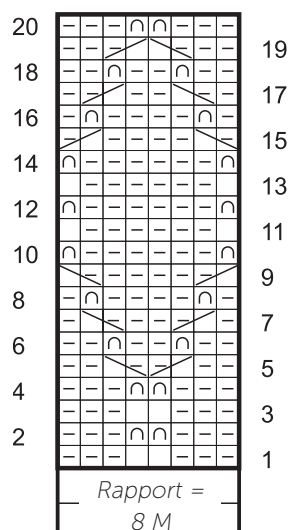
Rnd 6 (begins with k2): * K2tog, p1; rep from * 12 more times = 26 sts.

Rnd 7: K2tog around = 13 sts.

FINISHING

Cut yarn, draw yarn end twice through remaining 13 sts and pull tight.

Carefully weave in all ends

**Chart****Chart key**

- = k1 on RS, p1 on WS k1 on every rnd
- = p1 on RS, k1 on WS p1 on every rnd
- = slipped st: sl 1 st as if to purl with yarn in back of work on RS rows and all rnds, with yarn in front of work on WS rows
- = on RS rows and rnds, sl 1 st to cn and hold in back of work, k1, then p1 from cn
- = on RS rows and rnds, sl 1 st to cn and hold in front of work, p1, then k1 from cn

ABBREVIATIONS

- k** = knit
- p** = purl
- rnd(s)** = round(s)
- RS** = right side
- sl** = slip
- WS** = wrong side